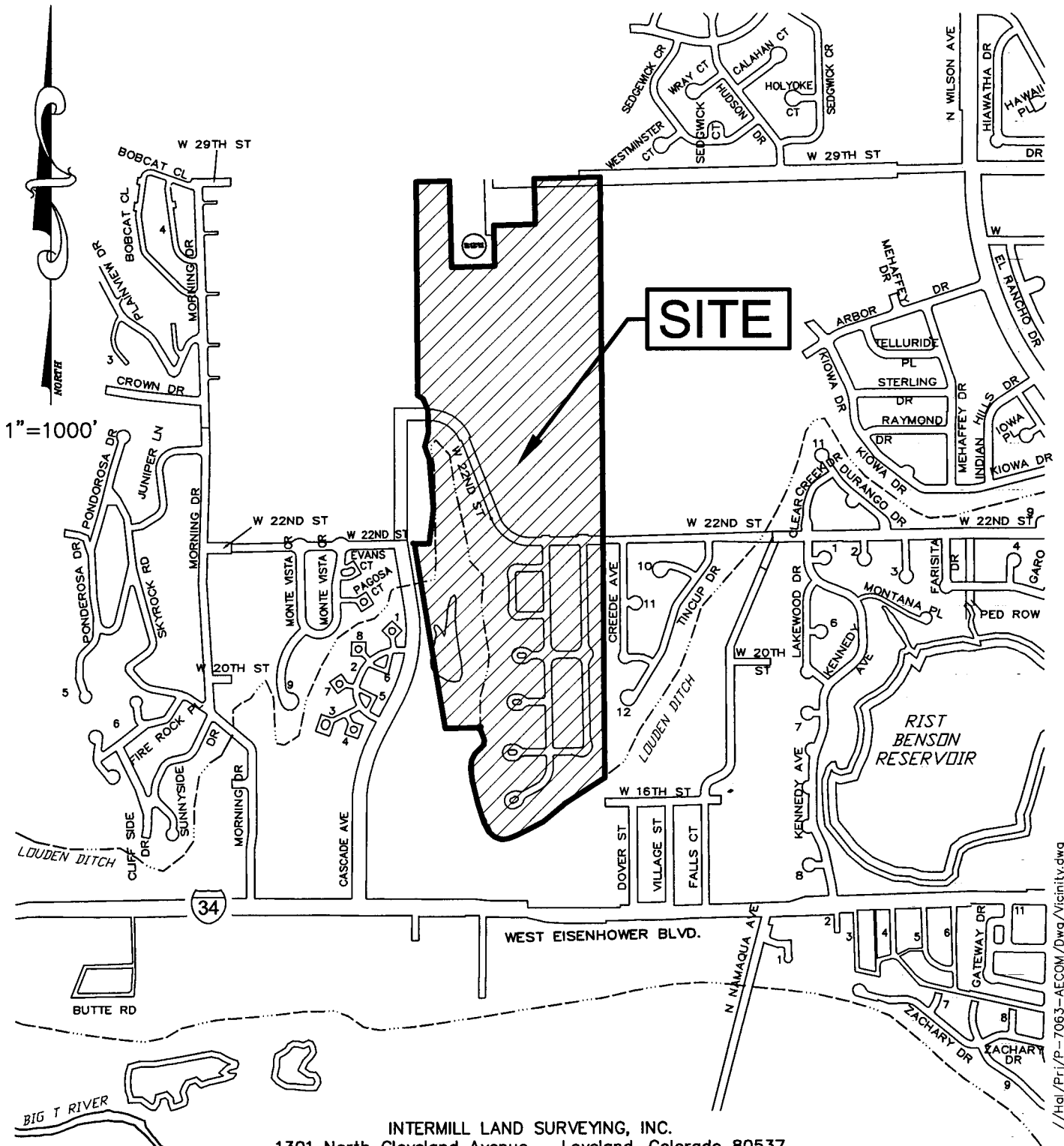


# VICINITY MAP FOR THE PROPOSED MEADOWBROOK RIDGE P.U.D. GDP FIRST AMENDMENT

SITUATE IN THE WEST HALF OF SECTION 9, TOWNSHIP 5 NORTH, RANGE 69 WEST OF  
THE 6th P.M., CITY OF LOVELAND, COUNTY OF LARIMER, STATE OF COLORADO



INTERMILL LAND SURVEYING, INC.  
1301 North Cleveland Avenue - Loveland, Colorado 80537  
P: (970) 669-0516 - F: (970) 635-9775 - E: intermill@qwestoffice.net  
Project No.: P-11-7063

/Hal/Prj/P-7063-AECOM/Dwg/Vicinity.dwg