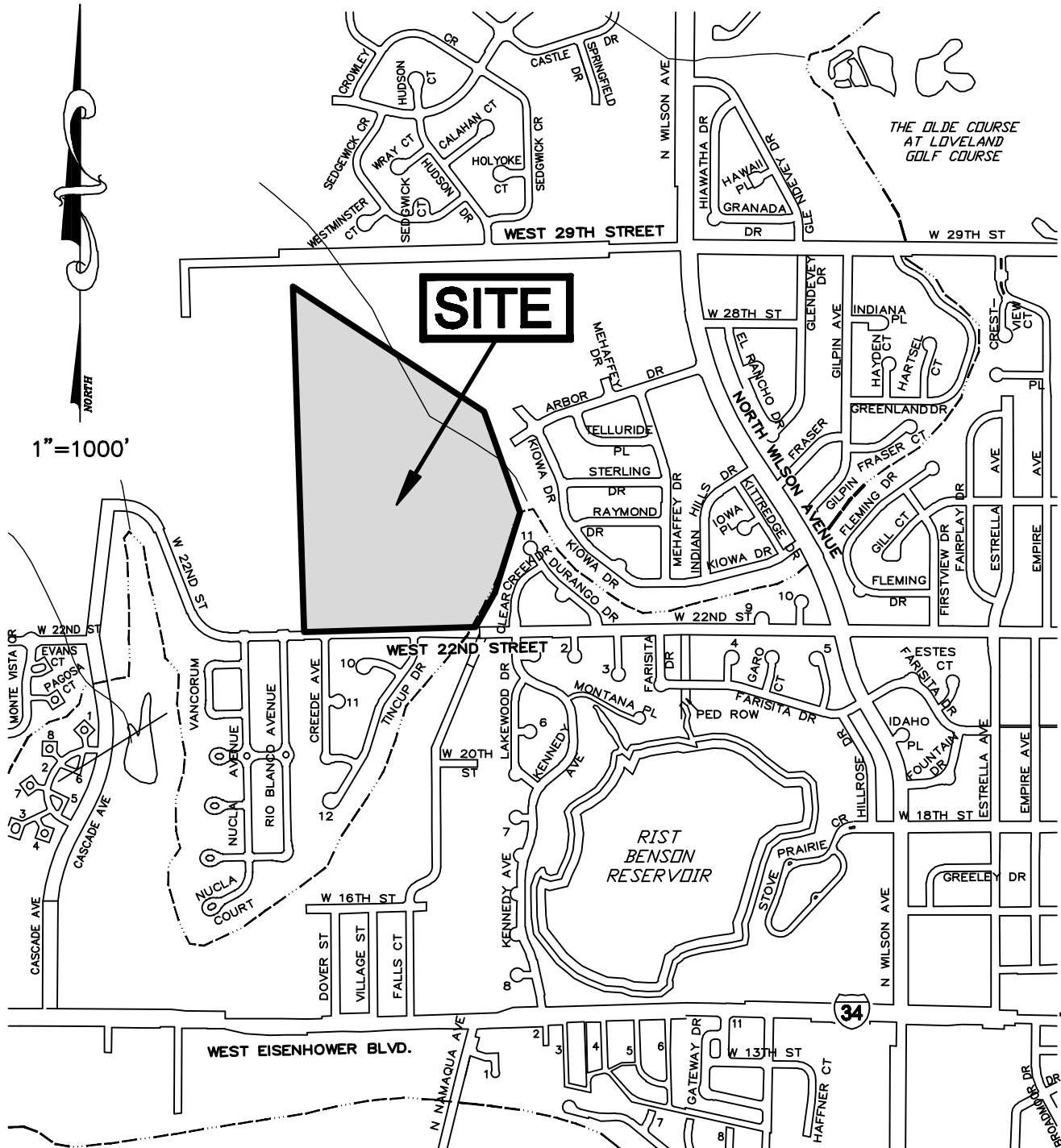


# VICINITY MAP FOR THE PROPOSED MEHAFFEY PARK FIRST ADDITION

BEING AN ANNEXATION OF LAND SITUATE IN THE NORTHEAST QUARTER OF SECTION 9,  
TOWNSHIP 5 NORTH, RANGE 69 WEST OF THE 6th P.M. TO THE CITY OF LOVELAND,  
COUNTY OF LARIMER, STATE OF COLORADO



INTERMILL LAND SURVEYING, INC.  
1301 North Cleveland Avenue - Loveland, Colorado 80537  
P: (970) 669-0516 - F: (970) 635-9775 - E: [intermill@qwestoffice.net](mailto:intermill@qwestoffice.net)  
Project No.: P-11-7063

\\Hal\Prj\P-7063-AECOM\Dwg\Vicinity.dwg