



www.cityofloveland.org

# THE LOVELAND City Update

June 2007

Volume 3 Number 6

## Summer is splendid in Loveland

The City of Loveland has so much to offer this summer, why go anywhere else? No matter what your interest Loveland has you covered with activities from art markets to puppet shows to yoga classes to rock band performances to picnics and fireworks.

For smaller Lovelanders, City departments are offering a host of fun and entertaining sport, science, dance, reading, storytelling and many other activities and day camps. The Rialto Theater has programs for budding thespians and the Loveland Museum/Gallery has a variety of art workshops for youth and adults.

Kids of all ages can take advantage of the free Foote Lagoon and Tunes at Noon concerts as well as take part in fun-filled



annual events such as the Cherry Pie Festival, Sculpture in the Park, and the Larimer County Fair plus new this year is SummerFest in the Rockies. For more on what to do this summer, just turn the page ...

*"Summer in the City" opportunities listing - pages 2 - 3*

## Major repaving for Hwy 34 this summer

The Colorado Department of Transportation (CDOT) has begun the first of two resurfacing projects on US Highway 34. The project will pave approximately eight miles of Hwy34 in asphalt between I-25 and Monroe Avenue.

CDOT is responsible for state highways within Loveland including Hwy 34, 287, 402 and I-25.

"The pavement on this stretch of Hwy 34 is very rough, especially following the winter we just had," said CDOT Project Engineer Miranda Roskop. "Given the location of this project, delays are inevitable; however, we plan to conduct the majority of work at night to minimize the impact."

During construction, a single lane on eastbound and/or westbound Hwy 34 may be closed Sunday through Thursday from 8 p.m. to 5 a.m. In addition, there may be periodic full closures of the intersections for paving operations. The speed limit will be reduced to 35 MPH through the entire work zone. Delays are expected and

alternate routes are advised for the duration of the project.

"Safety is our number one priority for motorists as well as our employees that are working on this busy stretch of roadway," added Roskop. "To ensure everyone's safety, it is critical that motorists obey the reduced speed limit and pay attention to our construction signs and flaggers."

In addition to paving, this project will improve the Park and Ride facility at I-25 and Hwy 34 by increasing parking capacity. The parking stalls located in the far south portion of the lot will be closed for the duration of construction to accommodate equipment and crews. Work at the park and ride is scheduled to be completed in June.

The second paving project will take place on US 34 between Garfield Avenue and Morning Drive. This project will begin later this summer. Construction updates for all locations will be posted on the City's website at [www.cityofloveland.org](http://www.cityofloveland.org). Go to the Public Works Department page.



## INSIDE

- Summer in the city  
Pages 2-3

---

- Don't blow your cool  
Page 4

---

- City code violations sprout  
Page 4

---

- Disposal law changes  
Page 4

---

- Getting a read on things  
Page 4

## Getting the most with the least

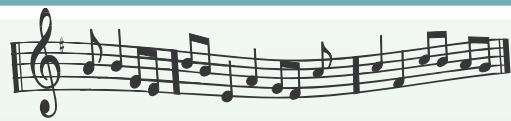
### Summer watering guidelines

As the days become hotter and dryer, lawns will start needing to be watered. Because water is a precious and limited resource, using the following guidelines will help you keep your lawn healthy while using water efficiently.

- Shaded lawns require less water
- Lawns that receive regular mowing and yearly aeration use water more efficiently
- If the weather is cool and cloudy you can delay watering
- The best time of day to water is early morning when water is less likely to evaporate
- Night watering may make your lawn more vulnerable to disease or root rot
- Test grass to see if it needs water by stepping on it – if it stays flat it's time to water
- A good soaking is required to nurture deep root growth but be careful to not over do it
- Avoid watering when its windy – wind carries precious water away
- Use sprinklers which are as low to the ground as possible

For more information on efficient summer watering call the Water & Power department, 962-3000.





# "Summertime and the living is ea

## Loveland Sports Park

Summer's the perfect time to enjoy the great outdoors and Loveland Sports Park has plenty of activities for the whole family.

What	When	Ages
Semi-professional 3 on 3 'Force Soccer'	June 21 & 22 (all day event)	Spectator event-All ages welcome
Baseball, hockey and soccer camps	June 25-29, 9 a.m.-Noon	Age 4-7
Football camp	July 9-12, 5-8 p.m.	Age 14-18
Soccer camp	July 16-19, 9 a.m.-Noon	Age 6-18
Basketball camp	July 23-27, 9 a.m.-Noon	Age 6-14
Skate board contest	July 28, 9 a.m.-1 p.m.	Age 6 & up
Lacrosse camp	July 30-Aug 2, 9 a.m.-Noon	Age 6-18
Car show ScinergyCO car club, tricycle race, drawings, splash park, remote control mini car races	Aug. 11, Noon-8 p.m.	All ages welcome
Skate board contest	Sept. 8, 9 a.m.-1 p.m.	Age 6 & up

Fees for activities and sports camps vary.

Please see the Leisure Times brochure on the Parks & Rec webpage at [www.ci.loveland.org](http://www.ci.loveland.org) or call 962-2432.

## Junior Golf Tournament "Fore" a good cause - July 20

What	When & Where	Ages
Golf Tournament to benefit Golfers of Tomorrow Cost is \$75.00 per person - includes green fees, Half-cart (w/GPS), dinner and prizes. Proceeds benefit Loveland Junior Golf and local High school golf teams. For more information call 962-2643.	Mariana Butte Golf Course 4-person scramble format	All ages and abilities welcome 1 p.m. shotgun start

## Summer is the perfect time to put your feet up and read a good book

Loveland Public Library, 300 N. Adams

What	When	Ages
Children's Reading Program	June 4 - July 31, 10 a.m.	Age Infant - 12
Monday Children's Program Puppet shows, musicians and children's theater	June 11 - July 23, 10 a.m.	Age 3 - 8
Mystery Book Talks plus mysterious activities and crafts	June 6 - July 25, 2 p.m.	Age 7 - 11
Teen Reading Program	June 4 - July 27	Age 13 - 17
Thursday Teen Programs "CSI Loveland" and "Duct Tape Wonders"	June 7 - July 26	Age 13 - 17
Teen Screen Free Friday movies for teens	June 8 - July 20, 2 p.m.	Age 13 - 17
Adult Reading Program	June 4 - July 27	Age 18 and up
Traveling Storyteller in the Park (scheduled for different parks throughout the summer)	June 5 - July 26	All Ages
Free Friday Kids Movies	June 8 - July 27, 2 p.m.	Age 3 - 12
Tuesday Evening Foote Lagoon Programs All programs begin at 7 p.m.	July 10 - High Country Cloggers July 17 - Musician Katherine Dines July 24 - Puppeteer Bob Aiken July 31 - Magician Bill Anderson	All ages
"Surviving Motherhood"	June 7 - July 26, 10 a.m.	Parents with children under age 2

For more information go to [www.cityofloveland.org](http://www.cityofloveland.org) and go to the library page or call 962-2665.

## Summer Preschool and Day camps

All budding astronauts, dancers, scientists and thespians *need* apply!

What	When	Ages
Summer Preschool: Activities include art, movement, music science, story telling, nursery rhymes & field trips	M/W, June 4 - 26, 9 - 11:30 a.m. T/Th, June 5 - 28 and July 10 - Aug 2 9 - 11:30 a.m. and 12:30 - 3 p.m.	Age 3 - 5 Age 3 - 5
Mad Science Camps: The Science of Flight: Red Hot Robots: Space and Flight Academy:	M - F, July 9 - 13, 1:15 - 5:15 p.m. M - F, July 30 - Aug 3, 1:15 - 5:15 p.m. M - F, June 18 - 22, 1:15 - 5:15 p.m.	Age 9 - 13 Age 8 - 13 Age 7 - 12
Drama Workshop: Intro to Theatre: Reader's Theater for Thespians:	M - F, June 11 - 15, 1 - 5 p.m. M - Th, June 25 - 28, 1:30 - 4:30 p.m.	Age 10 - 12 Age 7 - 9
Dance Camps: Beach Express jazz basics to fun beach music Broadway Essentials, getting ready for the big stage with tap and jazz fundamentals Dora the Explorer, Dora's the inspiration for these basic tap and jazz steps Fundamentals of Dance, dance fundamentals, stretching and basic dance technique These camps are offered at a variety of times and dates.		Age 4 - 9 Age 4 - 12 Age 4 - 7 Age 4 - 12

Please see the Leisure Times brochure on the Parks & Rec webpage at [www.ci.loveland.org](http://www.ci.loveland.org) or call 962-2458.

## Chilson Senior Center

Great activities for "big kids" presented by Chilson Senior Center

What	When & Where	Ages
Yoga - Gentle movement as the new day begins Cost, \$7.00 (bring a mat or towel)	Hammond Amphitheater at North Lake Park 29th St. & Taft June 2, July 7, Aug. 4 All classes are 8 - 8:45 a.m.	Age 16 and up
Chi Kung Cost, \$5.00 (bring a mat or towel) Register for both classes a week in advance. For more information call 962-2783.	Hammond Amphitheater at North Lake Park June 2, July 7, Aug. 4 All classes are 9 - 9:45 a.m.	Age 16 and up
"The Taffetas" - 50's style girl group Dinner included Register by June 27. For more information call 962-2783.	July 3, 4:30 - 11 p.m. Denver Center Performing Arts in Denver Round-trip transportation in a deluxe motor coach	Age 18 and up

## Oh go jump in a lake...or the Winona pool

### Lake Loveland Beach

Open daily 10 a.m. - 5 p.m. (weather and water levels permitting)

Closed July 4

### Winona Outdoor Swimming Pool

Hours: Mon. & Wed. Noon - 8 p.m.

All other days Noon - 5 p.m.

Family Swim: Sun. 10 a.m. - Noon

For more information call Winona Pool, 962-2409.

## Nothing says summertime like outdoor concerts!

### Foote Lagoon Concert Series

Civic Center Foote Lagoon,  
500 E. Third St., 7 to 9 p.m.,  
free of charge

Halden Wofford & the Hi-Beams - <i>Honky Tonk</i>	June 14
FortJazz Big Band - <i>Jazz &amp; Swing</i>	June 21
Chris Daniels & The Kings - <i>Jump/Rock/Blues</i>	June 28
The Elders - <i>Celtic Rock</i>	July 5
Kizumba - <i>Salsa</i>	July 12
Funkiphino - <i>70s &amp; 80s Funk</i>	July 19
101st Army Band - <i>Dixieland Jazz</i>	July 26
Bearfoot - <i>Bluegrass</i>	Aug. 2

### Tunes at Noon Concert Series

Peters Park, Loveland Museum/Gallery,  
503 N. Lincoln, 12 to 1 p.m.,  
free of charge

In case of rain, concerts will be moved into the museum auditorium.

Schedule is subject to change.

Bill Barwick - <i>Western Singer/Songwriter</i>	July 11
Book 'Em Danno - <i>Hawaiian Swing</i>	July 18
Brad & Kathy Fitch - <i>Estes Park Crooners</i>	July 25
Wild Mountain Celts - <i>Celtic</i>	Aug. 1

## More summer fun you say?

Don't miss these fantastic community festivals and celebrations

### 4th of July Celebration

North Lake Park/Hammond

Amphitheater, Corner of 29th & Taft

Faces of Eve - <i>Liz Barnez, Rebecca Folsom, Celeste Krenz</i>	3 - 5 p.m.
Oakhurst - <i>Roots Rock/Bluegrass</i>	5:15 - 7:15 p.m.
Loveland Concert Band	8 - 9:15 p.m.
Fireworks Show	Sundown

### Children's Safety Day - July 8

Promenade Shops at Centerra,  
Hwy 34 & I-25, Noon to 4 p.m.

Loveland Fire & Rescue will be conducting fire safety education tours for children.

Safety Sam will be there and a fire engine will be on display too!

For more information call 461-1285.

### Fifth Street Art Market - July 13

In front of the Museum/Gallery,  
503 N. Lincoln, 5:30 to 8:30 p.m.

The Loveland Museum/Gallery's Fifth Street Art Market is a great way to view and buy art from Loveland's newest talent. This is the third and final art market of the season.



# Easy Fish are jumping... ”

## Cherry Pie Celebration & Street Dance - July 14

Peters Park, Loveland Museum/Gallery, 503 N. Lincoln, 6 to 9 p.m., no admission fee

Pie & ice cream for sale.

Celebrate Loveland's heritage with cherry pie, ice cream and dancing in the street to the music of Stars & Garters Dixieland Band and Shawn Waggoner & the Tumblyweeds

## SummerFest in the Rockies - July 13 - 15

Civic Center Park/Foote Lagoon, 500 E. Third St.

July 13, 6:30 - 9 p.m.

July 14, 10 a.m. - 10 p.m.

July 15, 10 a.m. - 4 p.m.

SummerFest in the Rockies is a new Loveland community event featuring food, music & entertainment, arts & crafts, and interactive booths with something for every member of the family, plus a special downtown fireworks display Saturday night.

[www.engaginglovelandinc.org](http://www.engaginglovelandinc.org) or call (720) 254-8877.

## Teen Battle of the Bands - August 1

North Lake Park/Hammond Amphitheater, 29th & Taft, 3 to 9 p.m.

Free music with young local talent.

Call 962-2562 for entry information.

## Larimer County Fair & Rodeo - August 1 - 12

Larimer County Fairgrounds at the Ranch, I-25 just north of Hwy 34

Start times for activities vary.

This year's Fair & Rodeo will feature lots of rodeo action, agriculture, livestock shows, food, music, and fun! [larimer.org/fairgrounds](http://larimer.org/fairgrounds) or 619-4000.

## 24th Annual Sculpture Weekend - August 10 - 12

Benson Sculpture Park, Loveland High School, North Lake Park

Don't miss one of the largest outdoor sculpture shows and sales in the country. Hundreds of sculptors display their works. [www.cityofloveland.org](http://www.cityofloveland.org).

## Valley 5000 Run/Walk - August 17

Begins on 4th St. and finishes in the Chilson Senior Center parking lot

Race time is 7 p.m.

5K run/walk through downtown Loveland.

For more information call 622-2376.

## Corn Roast Festival - August 24 - 25

Downtown Loveland between 5th and 6th Streets on Hwy 287, begins at 4 p.m.

For more information call 667-6311.

## Thunder in the Rockies - August 31 - September 3

The Ranch, I-25 just north of Hwy 34

Start times for activities vary.

Join other motorcycle enthusiasts over Labor Day weekend and enjoy live music, stunt shows, bull riding and motorcycle rodeo.

[thunderintherockies.com](http://thunderintherockies.com) or 292-0418.

## Vacation Art Workshops for Youth and Teens

Loveland Museum/Gallery, 503 N. Lincoln

What	When	Ages
Action Sculptures - \$20	June 12 & 19, 10:30 a.m. - Noon	Grades 6-9
Marvelous Monoprints - \$10	June 12, 1:30 - 3 p.m.	Grades K-3
Drawing Animals - \$20	June 14 & 15, 1 - 2:30 p.m.	Grades 3-6
Recycled Journals - \$25	June 19 & 26, 1 - 3 p.m.	Grades 8 and up
Drawing Emotions - \$10	June 21, 10:30 a.m. - Noon	Grades 1-3
Drawing Emotions - \$15	June 21, 1 - 3 p.m.	Grades 4-7
Scratchboard Art - \$15	June 28, 1 - 3 p.m.	Grades 3-5
Here, Fishy, Fishy (wax resist) - \$20	July 12 & 19, 10:30 a.m. - Noon	Grades 1-3
O'Keefe Flowers - \$25	July 12 & 19, 1 - 3 p.m.	Grades 1-3
Tot Art: Summer Fun - \$20	July 13, 20, 27, 11 a.m. - Noon	Age 3-5 with an adult
Altered Books - \$25	July 13 & 20, 1 - 3 p.m.	Grades 8 and up
Tapestry Weaving - \$10	July 17, 10:30 a.m. - Noon	Grades 1-3
Kumihimo Braids - \$15	July 17, 1 - 3:30 p.m.	Grades 4-7
Monet's Garden - \$15	July 24, 1 - 3 p.m.	Grades 3-5
Tot Art: Little Ladybugs - \$8	July 24, 11 a.m. - Noon	Ages 3-5 with an adult
Egyptian Scrolls - \$20	July 26 & Aug. 2, 10:30 a.m. - Noon	Grades 1-3
Egyptian Relief - \$25	July 26 & Aug. 2, 1 - 3 p.m.	Grades 4-7
The Very Hungry Caterpillar - \$10	July 27, 1 - 2:30 pm	Grades 1-3
Tot Art: Tapestry Weaving - \$8	July 31, 11 a.m. - Noon	Ages 3-5 with an adult
Tile Wrap Weaving - \$15	July 31, 1 - 3:30 p.m.	Grades 4-7
Picasso Portraits - \$15	Aug. 3, 10:30 a.m. - 12:30 p.m.	Grades 3-5
Monet's Garden - \$15	Aug. 3, 1 - 3 p.m.	Grades 3-5
Let's go to the beach (watercolor)-\$30	Aug. 7, 9, 10, 1 - 3 p.m.	Grades 4-8
Leaf Print Shirts - \$10	Aug. 9, 10:30 a.m. - Noon	Grades 4-7

Advance registration is required for all workshops. Registration deadlines are one week before class start dates. For more information or to register call 962-2410.

## More Art Exhibits and classes at the Loveland Museum/Gallery

Infinite Dimensions - Glass Art Sculpture by Ray Howlett	June 9 to July 22
Hook, Hammer and Hang Loveland Community Open Art Exhibition. Loveland residents can hang and sell their art work (no larger than 36" X 36") At the Museum Foote Gallery/Auditorium. All Ages welcome - First come/first serve	June 2 to July 8
A Walk through Diversity - Fine Art Portraits An illustrated talk and book signing by photographer Ronda Stone	June 21, 7 p.m.
Bottle Trees - A Space for Family Spirits An illustrated talk by Dr. Ella Maria Ray	June 24, 2 p.m.

## Dancing Through History

History, Events and Street Dance, June 30, Noon-8 p.m.

Peters Park, Loveland Museum/Gallery, 503 N. Lincoln

Celebrate the Grand Opening of two new history exhibits at the Museum: Foot and Stoddard Livery Stable and Blacksmith Shop and the Proctor's Alabaster Gift Shop. A full day is planned featuring Museum tours, children's activities, food and performances. The event will end with an evening of traditional dancing featuring caller Sharon Guli and the Grandview Victorian Orchestra.

## Art Classes for Adults

Adult Art Workshops - instruction in acrylic and watercolor painting, pastels, pencil drawing and lithographs (age 14 and up for lithograph class). Call the Museum/Gallery for class schedule and fees. For information on all Loveland Museum/Gallery events and programs call 962-2410.

## Kids 'acting' up? The Rialto has just the thing

What	When & Where
Missoula Children's Theatre Auditions for The Pied Piper. Entering grades 1-12, Tuition: \$40 (\$25 for students cast as 'Rats') Performance: June 23, 3 & 7 p.m. Tickets: \$5	June 18, 10 a.m., Chilson Center
C.A.S.T. (Creative Arts for Students of Theater) Camp Auditions for Cinderella. (Pick up required audition packet at Rialto Theater Box Office) Age 10-18; Tuition: \$100; Performance: July 28, 3 & 7 p.m. Tickets: \$5 adult, \$3 children	July 16, 1:30-3:30 p.m., Rialto Theater
Tuesday Theater for Kids Tickets: \$5 adult, \$3 children; Group pricing available-call 962-2120.	Rialto Theater All shows are at 10 a.m. & 2 p.m.
Justin Miera - Singer/Songwriter	June 12
Black Hand Drum Ensemble - African Drumming	June 26
Bug Songs - Fun Songs about Insects	July 31
Busker & Me: A Circus Dog's Tale (Manitou Art Theatre)	Aug. 21

For information on all Rialto events and programs, call 962-2120.

## Don't blow your cool this summer

Every summer Loveland experiences a few extremely hot days when air conditioners have to work extra hard to keep homes cool. These 'peak' hours from 2 to 7 p.m. put a lot of stress on the power system.

The Loveland Power division designed *Partnering With Power* to alleviate the extra demand on the electric utility during peak hours while still keeping your home comfortable. The program also helps keep electricity rates low, helps preserve the environment and reduces the

potential for brown outs or black outs during times of high electric output.

After enrolling, a Loveland Water and Power employee will install a small remote-controlled device on your home's air conditioner outside. The device activates during peak hours. The indoor temperature will go up a degree or two—not really enough to notice, but enough to save a substantial amount of power.

For more information call 962-3720.

## Getting a read on things

Back in 1979, when Kent Meyer first started reading electric and water meters for the City of Loveland, he was one of two meter readers. Today it takes a crew of 10.

Meyer, crew supervisor of meter readers, said meter readers may visit 225 to 400 homes each day. A meter reader can usually read 225 to 250 homes a day in the older parts of town where meters are frequently located in back yards and sometimes even on back porches. Meters for homes in newer areas are often more accessible, allowing meter readers to visit up to about 400 homes in a day.



Most routes include both water and electric meters. Most meters are read once a month, every month, summer or winter, rain or shine. Currently there are over 30,000 electric meters and over 23,000 water meters, "and those numbers are growing every day," Meyer said.

The crew also includes a field service representative who checks for leaks when customers have high water usage and maintains the city's free porch light program in older parts of town.

Weather tops the list of challenges facing meter readers in doing their work. Reading meters is great on a day with beautiful weather, Meyer said. "But they're out there when it's cold and snowy and rainy, too."

Dogs run a close second. "We have quite a few meters located in back yards," Meyer said. Meter readers will sometimes knock on the front door to ask for help if pets appear threatening. Utility customers who aren't home to help may receive a postcard asking them to read the meter, mark the card and return it. Some customers are on a customer call list, receiving phone calls a day in advance of when their meters are to be read.

Landscaping, too, can present challenges. "If customers have tree branches or bushes blocking their meters, a little pruning around the meter can help meter readers by making meters more accessible and visible," Meyer said.

In addition to reading meter routes each month, the crew routinely delivers late notices, verifies readings and takes readings for customers moving into or out of their residences.

## New disposal law for tires, batteries, oil

Beginning July 1, a new state law to protect public health and the environment prohibits tires, used motor oil and lead-acid (automotive) batteries from landfill disposal. For Loveland residents, this means that these items cannot be placed in your household trash, which goes to the landfill.

All these items can be recycled at the City recycling center, 400 N. Wilson Ave. Fees may be charged for tire drop-off. Call the Solid Waste Division, 962-2529., for details.

## City code violations sprout during summer

City officials are always on the lookout for violations of City regulations that affect the health, safety and appearance of Loveland. Some City code issues arise more frequently during the summer months.

Because residents become more active with hammers, saws, mowers and the like, there are more frequent reports of collections of waste, rubbish and construction debris piling up on properties. Prompt and proper disposal of trash is a City requirement.

Trailers come out of storage during the summer. Be aware that any trailer parked on a public street must have a license plate. And trailers may be left unhitched on a public street for no more than an hour. Trailers on private property may be unlicensed and remain unhitched.

The City prides itself on its attention to the environment, but there's such as thing as being too green. Uncontrolled growth of weeds, grass and other vegetation on

private property is not permitted. Also, bushes, plants and other foliage that overgrows and blocks or reduces visibility along sidewalks and other public passageways must be trimmed.

Along with greenery, signs advertising garage sales and other opportunities sprout during the warm weather. Residents are reminded that signs can be placed only on their own property; not on public poles and signposts or set out on sidewalks and street corners.

Also remember that sand, gravel and other building materials must not be on public property, including the parking lane in the street in front of a home. Materials such as stone and sand for use in landscaping must be delivered onto private property, not piled in the street or blocking sidewalks.

Citizens' cooperation is appreciated. City code enforcement and police officers actively pursue violations everyday, including weekends.

Clip & Save

Code Violation	Who to Call	Phone
Abandoned vehicles – private property	Code Administrator	962-2506
Abandoned vehicles – public property	Police Department	962-2151 Ext. 1901
Animal complaints or questions	Humane Society	226-3647
Building construction information	Building Division	962-2505
Blocking streets and alleys	Police Department	667-2151
Construction complaints	Building Division	962-2506
Illegal dumping	Code Administrator	962-2506
Illegal fireworks	Police Department	667-2151
Garage/Yard sales	Code Administrator	962-2506
Mosquito problems	Mosquito Control	962-2583
Noise complaints	Police Department	667-2151
Shrubs/trees blocking view	Traffic Division	962-2535

*City Update* is a monthly publication of the City of Loveland. Residents receive *City Update* on various dates throughout the month depending on their utility billing cycle. Timeliness of the information may be affected by recipients' bill distribution schedule. Your comments are encouraged and welcomed at 962-2302, hillea@ci.loveland.co.us. Visit the City's website at [www.cityofloveland.org](http://www.cityofloveland.org).