



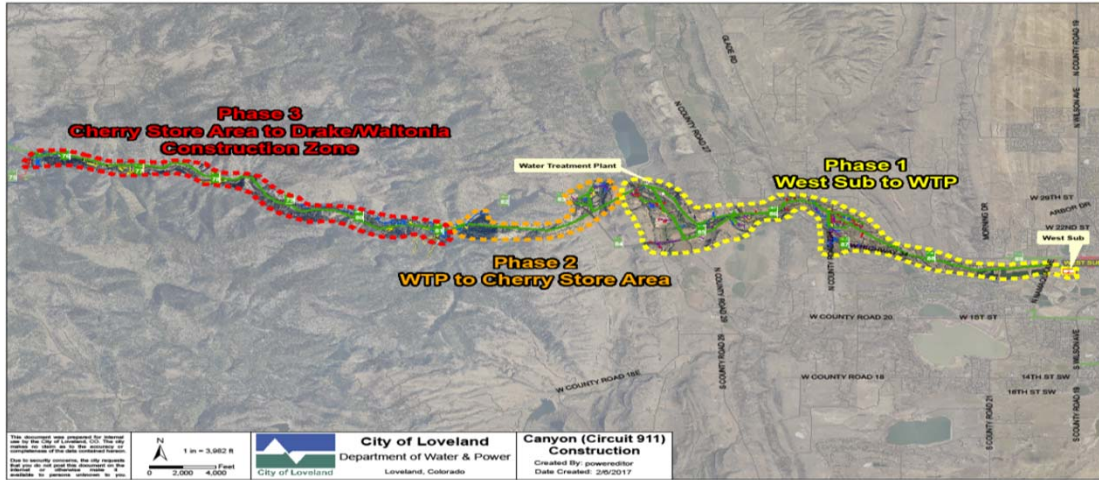
## Big Thompson Canyon Community Meeting

November 29, 2017

### Agenda

- 🌀 Construction Overview & Timeline
- 🌀 Reliability Improvements
- 🌀 Construction Pictures
- 🌀 Upcoming Planned Outage
- 🌀 Questions

# Canyon Construction Overview Map



**Loveland**  
Water and Power

# Construction Timeline

PHASE 1	PHASE 2	PHASE 3
<p>Expected completion - Jan. 31, 2018</p> <p><b>Phase 1A:</b> West Substation to Glade Rd. &amp; Becker Lane (COMPLETE)</p> <p><b>Phase 1B:</b> Glade Rd./Becker Lane to City of Loveland Water Treatment Plant. (UNDER CONSTRUCTION)</p>	<p>Feb. 1, 2018 – September, 2018</p> <p><b>Phase 2A:</b> Water Treatment Plant to Sylvandale Ranch (ISSUED FOR REVIEW)</p> <p><b>Phase 2B:</b> Sylvandale Ranch to Colorado Cherry Company Store (IN DESIGN, REVIEW SET DUE DECEMBER 22, 2017)</p>	<p>October, 2018 – March, 2019</p> <p>Cherry Store to end of line in Drake &amp; Waltonia. (DESIGN KICK-OFF DECEMBER 8, 2017)</p>

**Loveland**  
Water and Power

## Improving Reliability

- 🌀 Rebuilding shorter sections of overhead line to minimize area under construction
- 🌀 Adding auto-recloser devices to reduce number of customers exposed to outage at one time
  - 🌀 Increases segmentation of line to reduce number of customers exposed to outage at one time
  - 🌀 Devices de-energize line briefly to allow temporary fault to clear itself before re-energizing. Operate up to 3 times before locking open
- 🌀 Eliminating steel poles
  - 🌀 Reduces opportunity for electrical 'flashover'

**Loveland**  
Water and Power

## Improving Reliability

- 🌀 Relocation of poles to reduce likelihood of car/pole incidents
- 🌀 Implementing aggressive tree trimming operations
  - 🌀 Will require cooperation of landowners
  - 🌀 Once permission is granted, encroaching trees will be trimmed / removed at City expense
- 🌀 Establishing single point of contact for customers to direct questions / express concerns
  - 🌀 Tracey Hewson 970.962.3710 [tracey.hewson@cityofloveland.org](mailto:tracey.hewson@cityofloveland.org)

**Loveland**  
Water and Power

## More Straightforward Construction



**During**



**After**

Photos of corner pole south of W. County Road 24 during construction and after rebuild.

**Loveland**  
Water and Power

## Upcoming Planned Outage

🌀 Tuesday, December 5<sup>th</sup> from 9 a.m. to 11 a.m.  
Weather make-up date is Thursday, December 7<sup>th</sup>.

🌀 Who's affected: Customers along County Road 29 (Waterdale Drive) and all customers west of County Road 29 up to and including Drake/Waltonia

**Loveland**  
Water and Power

**Loveland**  
Water and Power

# QUESTIONS?