

**IMPORTANT NOTICE PULSE NETWORK DEVELOPMENT WORK COMING TO YOUR NEIGHBORHOOD**

Hello Neighbor,

We are excited to announce that deployment of Pulse, the City of Loveland's 100% fiber-optic network, is underway. This letter means that work will begin in and around your neighborhood within the next 1 to 2 weeks.

**What is Pulse?**

Pulse is a trusted local utility connecting the Loveland community by offering affordable, reliable and fast internet and voice service through a 100% fiber-optic network. Established in 2018, the community-owned utility is built on a promise of local service, transparency in rates and speeds, and a promise of responsiveness second to none. Pulse is an optional service and, in order to provide this value to our community, we need to build the network throughout the entire city so that all residents and businesses have the opportunity to connect.

**How can I identify Pulse construction?**

Pulse has partnered with locally-owned and operated construction companies Ditesco and Colorado Boring. These teams will have Pulse-approved contractor signage on their vehicles.



**For everybody's safety we request that the public maintain a safety perimeter of at least 30 feet from vehicles and areas of work.**

**What is going to happen in my neighborhood?**

You may see utility locators in your area taking note of gas, electric, water and sewer equipment. Physical "locates" will either be paint marks that will fade over time or flags in the ground. Please do not remove the markers from their locations. If you have questions about the locates, please dial 8-1-1 for more information.



You may see heavy equipment driving in your neighborhood to provide materials and support the construction crews. They will begin installing fiber pathways along existing public rights of way and utility easements using directional boring. Research shows that this method is the most efficient installation approach.



We will be installing "fiber vaults" to contain fiber equipment in some yards. These are boxes that sit underground so you will only see the top of the box upon completion, similar to how you see the top of a water-meter cover. Often the fiber vaults will be co-located next to existing utilities for minimum overall impact.



To keep the project moving forward, please do not park in construction zones. "No Parking" areas will be designated with cones and signage. If parking becomes temporarily unavailable, you should see signage appear 24 or more hours in advance. Rest assured, we will work with you to get in and out of your driveway and neighborhood.



Crews will install fiber network equipment, restore landscaping, and clean up after themselves. When we're done you'll receive a note on your door. You will be notified if anything out of the ordinary occurs on your property during this process.

## What's next?

This is the first in a multi-step process to build the Pulse network. We will reach out to neighborhoods directly when we are ready to sign up customers for service. However, you can alert us of your interest and receive email updates from us by visiting [LovelandPulse.com](http://LovelandPulse.com) and completing the "Early Interest" form.

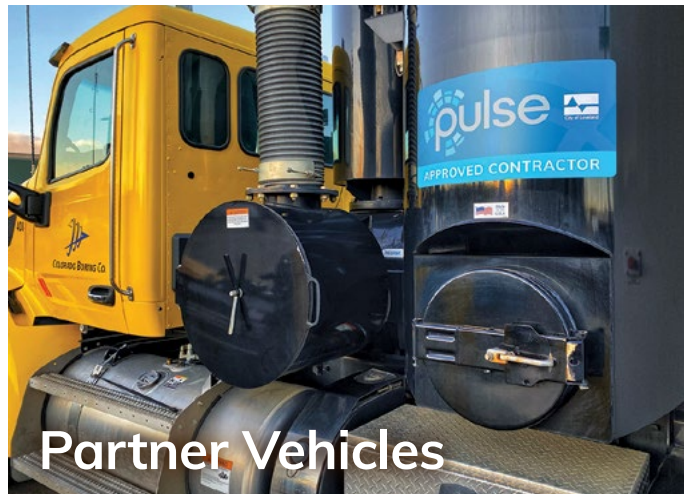
**More information is coming to you soon. We thank you in advance for help with this process and please contact us with questions.**

With thanks,

*Kim Reeves, Pulse Construction Project Manager & your local Pulse Team*



Utility Locates



Partner Vehicles



How can I find out more?

For questions or concerns about construction in your neighborhood:

- **Construction Hotline:** 970-798-8800

For general questions about Pulse:

- **Pulse Information:** 970-962-2010
- **Email:** [Pulse@cityofloveland.org](mailto:Pulse@cityofloveland.org)
- **Website:** [LovelandPulse.com](http://LovelandPulse.com)

The City of Loveland is committed to providing an equal opportunity for services, programs and activities and does not discriminate on the basis of disability, race, age, color, national origin, religion, sexual orientation or gender. For more information on non-discrimination or for translation assistance, please contact the City's Title VI Coordinator at [TitleSix@cityofloveland.org](mailto:TitleSix@cityofloveland.org) or 970-962-2372. The City will make reasonable accommodations for citizens in accordance with the Americans with Disabilities Act (ADA). For more information on ADA or accommodations, please contact the City's ADA Coordinator at [ADACoordinator@cityofloveland.org](mailto:ADACoordinator@cityofloveland.org) or 970-962-3319.

La Ciudad de Loveland está comprometida a proporcionar igualdad de oportunidades para los servicios, programas y actividades y no discriminar en base a discapacidad, raza, edad, color, origen nacional, religión, orientación sexual o género. Para más información sobre la no discriminación o para asistencia en traducción, favor contacte al Coordinador Título VI de la Ciudad al [TitleSix@cityofloveland.org](mailto:TitleSix@cityofloveland.org) o al 970-962-2372. La Ciudad realizará las acomodaciones razonables para los ciudadanos de acuerdo con la Ley de Discapacidades para americanos (ADA). Para más información sobre ADA o acomodaciones, favor contacte al Coordinador de ADA de la Ciudad en [ADACoordinator@cityofloveland.org](mailto:ADACoordinator@cityofloveland.org) o al 970-962-3319.